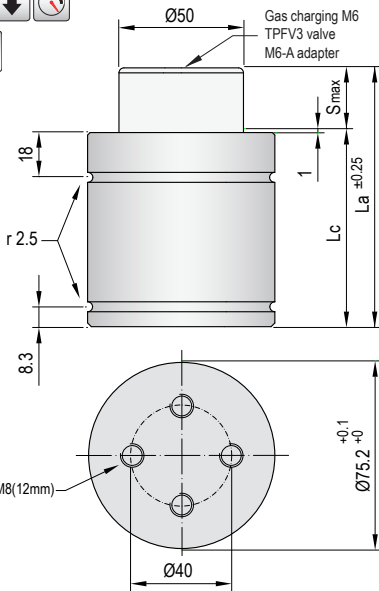


VDI SAFETY

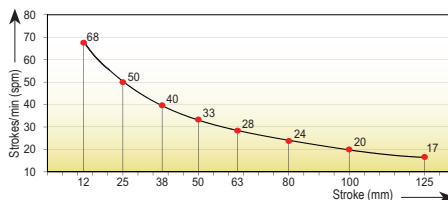


**i** Pressure medium **Nitrogen (N<sub>2</sub>)**

Max. charging pressure	150 Bar
Min. charging pressure	35 Bar
Rod seal area	19,63 cm <sup>2</sup>
Operating temperature	0°C - 80°C
Force increase by temperature	0,33 %/°C
Max. stem speed	0,6 m/s
Maintenance kit	Kit CT3000

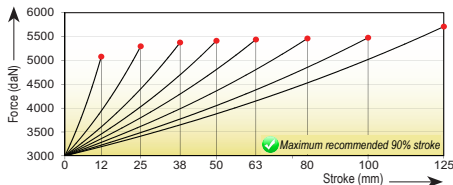


Maximum strokes / minute (at 20°C)

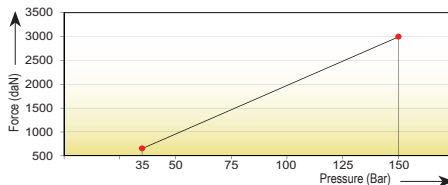


Code	Smax mm	La mm	Lc mm		Fa daN		F daN		Fc daN		P Bar		V l		Kg
TPCT 3000x12	12	78	66	3000 ±5% (20°C)			4755		5085		150 (20°C)		0,058		1,60
TPCT 3000x25	25	104	79				4925		5305				0,113		1,90
TPCT 3000x38	38	130	92				4500		5380				0,169		2,05
TPCT 3000x50	50	154	104				5015		5420				0,220		2,30
TPCT 3000x63	63	180	117				5035		5445				0,276		2,55
TPCT 3000x80	80	214	134				5055		5470				0,349		2,95
TPCT 3000x100	100	254	154				5065		5485				0,434		3,25
TPCT 3000x125	125	304	179				5245		5715				0,517		3,70

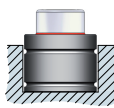
Force/stroke ratio



Initial force/charging pressure ratio



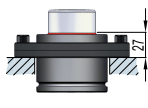
Assembly possibilities



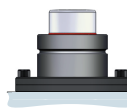
DROP-IN



SCREWS



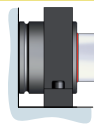
FS 75 · FSC 75



FS 75 · FSC 75



FB 75



FI 75 · FI 75/1

TPCT

TPSL

STOP CYLINDER

STOP CYLINDER

STOP CYLINDER

TPSR

TPSRs

TPNS

TPHT

